

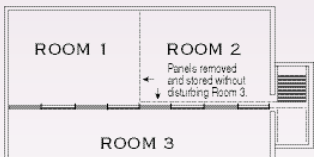
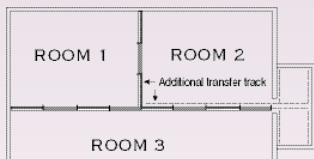
TRACK SYSTEMS

for operable walls



HUF COR TIP FOR MULTI-USE FACILITIES

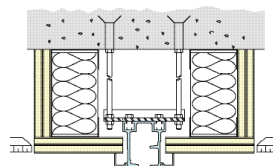
Purchase "transfer" track. Transfer track is additional track that is installed parallel to the main track. It enables rooms to be set up or taken down without disturbing adjacent rooms. This saves set-up time and helps hotels and convention centers accommodate more meetings without disrupting groups in session. Transfer track is also used to set up parallel panels, creating a double wall to optimize acoustics during extremely noisy events.



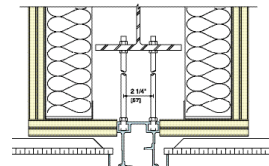
Operable Track Selections

A quality track system assures your partitions will move easily for years to come and enhance fast panel set-up and take-down. All Hufcor tracks are rigorously tested to last a minimum of 100 miles (approximately ten years) of use. Job requirements vary, which is why Hufcor offers a selection of tracks to meet your needs. Our patented designs are the most imitated in the industry.

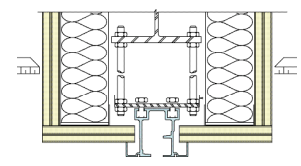
SOME TYPICAL SUSPENSIONS:



From Concrete Deck



Directly from Steel Beam



From Suspension Below Steel Beam

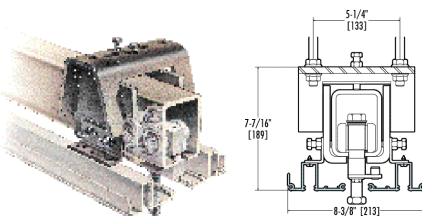
Steel Track System

Hufcor Steel Track is used when the partition height or weight limit exceeds that recommended for the aluminum system. The tracks have been load tested a minimum of 100 miles [161] (approximately 10 years of use).

TYPE 11 PAIRS, OMNIS AND ELECTRIC TRAINS TO 3000 LBS. PER PANEL

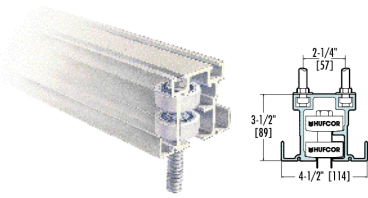
For Pairs and Electric Trains weighing up to 1500 lbs. [680] and Omnis weighing up to 3000 lbs. [1364] per panel. The track is of 1/4" [6] slotted structural steel tubing, painted black. The track trim is clear anodized aluminum. All intersections are factory assembled and welded. Curves, diverters or switches are available. One carrier is provided per panel for pairs and trains; two carriers per panel for omnis. Each carrier has four steel wheels with precision-ground radial bearings. Bearings are inserted into a steel tire. The steel tire rim fully captures the bearing. Carriers may be programmed for self-directing and sorting. Minimum dimension from the ceiling to the structure is 12" [305]; the minimum becomes 16" [406] when used with electric partitions.

Note: Metric dimensions are in []



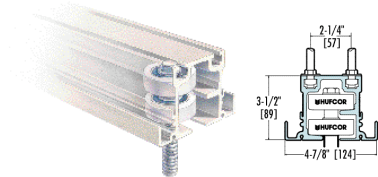
Aluminum Track Systems

Our aluminum tracks are of clear anodized extruded architectural-grade 6063-T6 alloy. The list of aluminum benefits is long. Among these are quiet carrier operation, consistent shape for end-to-end alignment, unitized design for incorporating header panels and alignment pins, corrosion-resistance, and enables anodizing for a smooth, hard running surface needed for proper carrier movement.



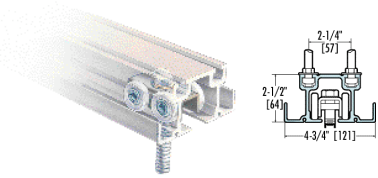
TYPE 26 OMNI-DIRECTIONAL TO 500 LBS. PER PANEL

For Omni-Directional panels up to 500 lbs. [227]. Two carriers are provided per panel. Each carrier has two horizontal counter-rotating wheels that roll (not slide) in the track. Each wheel has precision-ground bearings, encased with Delrin for quiet operation. Carriers easily negotiate square or angled corners without switches. Minimum dimension from the ceiling to the structure is 8" [203].



TYPE 36 OMNI-DIRECTIONAL TO 1000 LBS. PER PANEL

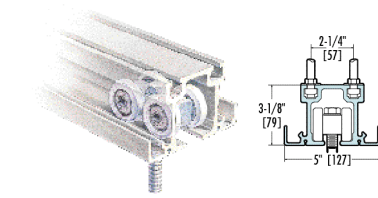
For Omni-Directional panels up to 1000 lbs. [455]. Patented by Hufcor, this unique track and carrier system is the world's most imitated. Two carriers are provided per panel. Each carrier has two horizontal counter-rotating wheels that roll (not slide) in the track. Each wheel has precision-ground bearings, encased with Delrin for quiet operation. Carriers easily negotiate square or angled corners without switches. Minimum dimension from the ceiling to the structure is 8" [203].



TYPE 38 PAIRS AND MANUAL TRAIN PANELS TO 400 LBS. PER PANEL

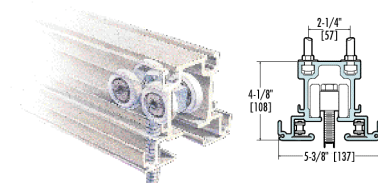
For Paired Panels and Manual Trains up to 400 lbs. [182]. One 4-wheeled carrier is provided per panel. Each wheel is of molded polymer tires on hardened steel ball bearings. Minimum dimension from the ceiling to the structure is 8" [203].

The Type 38 track is also available with an omni carrier for panels weighing up to 400 lbs. [182]. Two carriers are provided per panel. Each carrier has one horizontal wheel that rolls in the track. The wheel has precision ground bearings and is encased with Delrin for quiet operation.



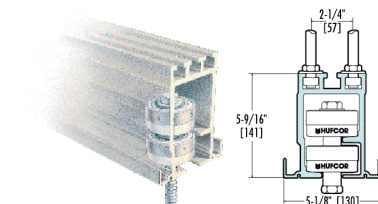
TYPE 40 PAIRS AND MANUAL TRAINS TO 700 LBS. PER PANEL

For Paired Panels and Manual Trains up to 700 lbs. [318]. One 4-wheeled carrier is provided per panel. Each wheel consists of molded polymer tires on hardened steel bearings. Resilient mounted body for quiet operation and load distribution. Minimum dimension from the ceiling to the structure is 8" [203].



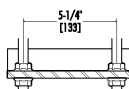
TYPE 42E ELECTRIC TRAINS TO 700 LBS. PER PANEL

For Electric Trains up to 700 lbs. [318]. One 8-wheeled carrier is provided on each panel – four wheels ride in overhead track and four in the top panel rail to ensure smooth, even-folding action. Each wheel consists of molded polymer tires on hardened steel bearings. Resilient mounted body for quiet operation and load distribution. Minimum dimension from the ceiling to the structure is 16" [406].



TYPE 57 OMNI-DIRECTIONAL TO 1500 LBS. PER PANEL

For Omni-Directional panels weighing between 1000 and 1500 lbs. [455-680]. Two carriers are provided per panel. Each carrier has two horizontal counter-rotating wheels that roll (not slide) in the track. Each wheel has precision-ground bearings, encased with Delrin, steel banded and reinforced. Carriers easily negotiate square or angled corners. Minimum dimension from the ceiling to the structure is 12" [305].



OPTIONAL SUSPENSION BRACKET

Optional suspension bracket for 5-1/4" [133] spacing. Available on all aluminum tracks.